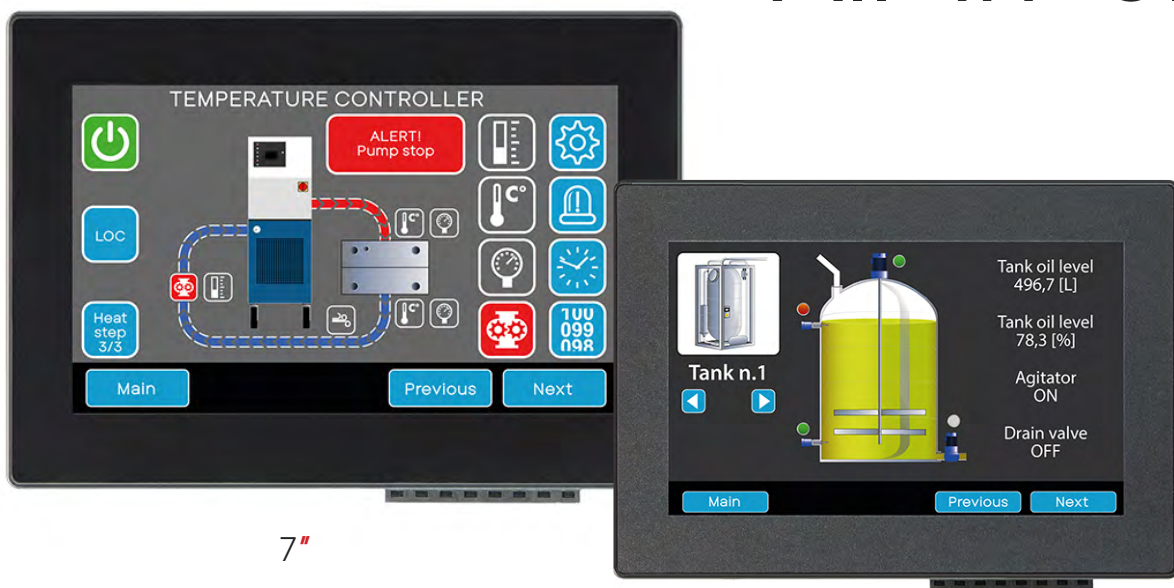


TINY series

HMI Soft PLC

All-in-one



7"

5"

LOGIC LAB
IEC 61131-3 ENVIRONMENT

PAGE LAB
EMBEDDED HMI

- ✓ Linux Ubuntu RealTime OS
- ✓ LogicLab PLC Programming tool (IEC61131-3) +
PageLab integrated graphic design platform
- ✓ Optional Pixsys Portal VPN Remote Control and Assistance tool
- ✓ Multiple I/O solutions (open-frame or DIN-rail mount enclosure)
- ✓ Fieldbuses: Modbus RTU M/S, Modbus TCP M/S, CANopen M
- ✓ OPC UA Server, MQTT Client



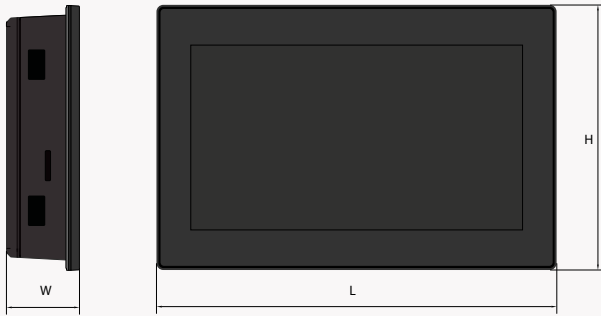
Pixsys Srl

Via Po 16, I - 30030 Mellaredo di Pianiga VE
Ph. +39 041 519 0518 Mail sales@pixsys.net

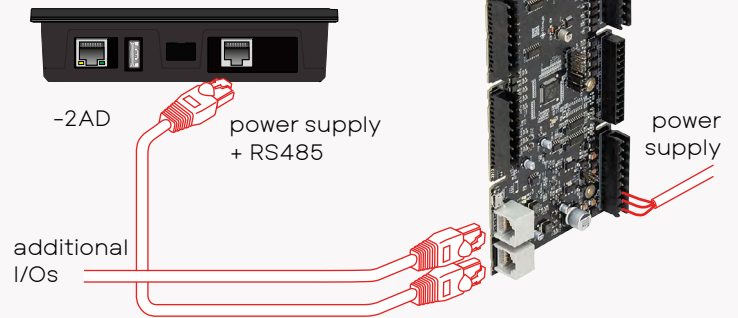
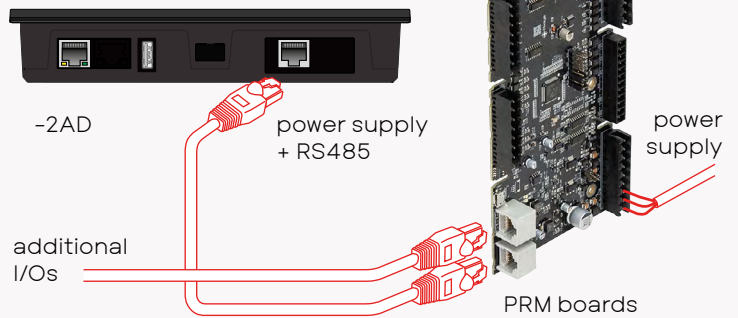
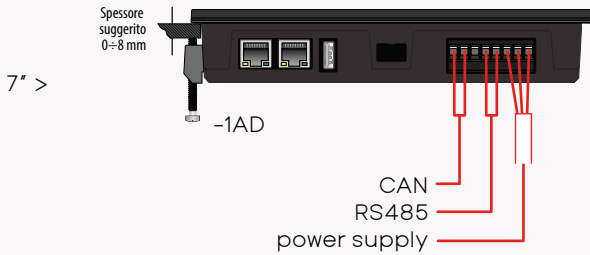


WWW.PIXSYS.NET

TY HMI Soft PLC



DIMENSIONS (mm)					
MODEL	L	H	W	L (CUT-OUT)	H (CUT-OUT)
TY550	137	96	35	130	90
TY750	137	96	35	130	90
TY570	186	123	34	179	116
TY770	186	123	34	179	116



GENERAL FEATURES

POWER SUPPLY	12..24V DC
CONSUMPTION	6W max
OPERATING SYSTEM	Linux Ubuntu RealTime
CPU	Rockchip Single Core 1,2 GHz
RAM	256Mb
PIXSYS PORTAL (VPN)	Remote control and assistance service (optional)

OPTIONS

- Up to 2xETH 10/100Mbit
- 1x CAN bus on terminal block
- 1x RS485 on terminal block or RJ45 connector
- 1x USB 2.0 port
- Wide screen capacitive / resistive displays: size 5" (resolution 800 x 480 px) or size 7" (resolution 1024 x 600 px)

I/O MODULES

PRM-PS-A-T1	I/O open-frame 2 PT1000, 4X 4..20mA / 0..10V, 8DI, 8PNP + 8MPM DO selectable, 2AO, 1PWM
PRM-PS-A-T2	I/O open-frame 3 RTD, 1 AI 4..20mA, 8DI, 8DO, 2AO, 1PWM
MCM260X	DIN-rail enclosure, modular concept, 6 versions (see datasheet)
ETD1644	Compact I/O module, 16 DI/O, 4 AI, 4 AO, supply 12...24VDC